

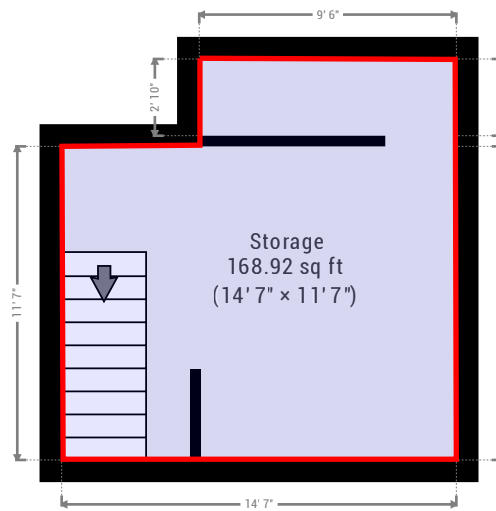
32 Egginton St, Leicester LE5 5BE

TOTAL AREA: 1548 ft² (68m²) • FLOORS: 3



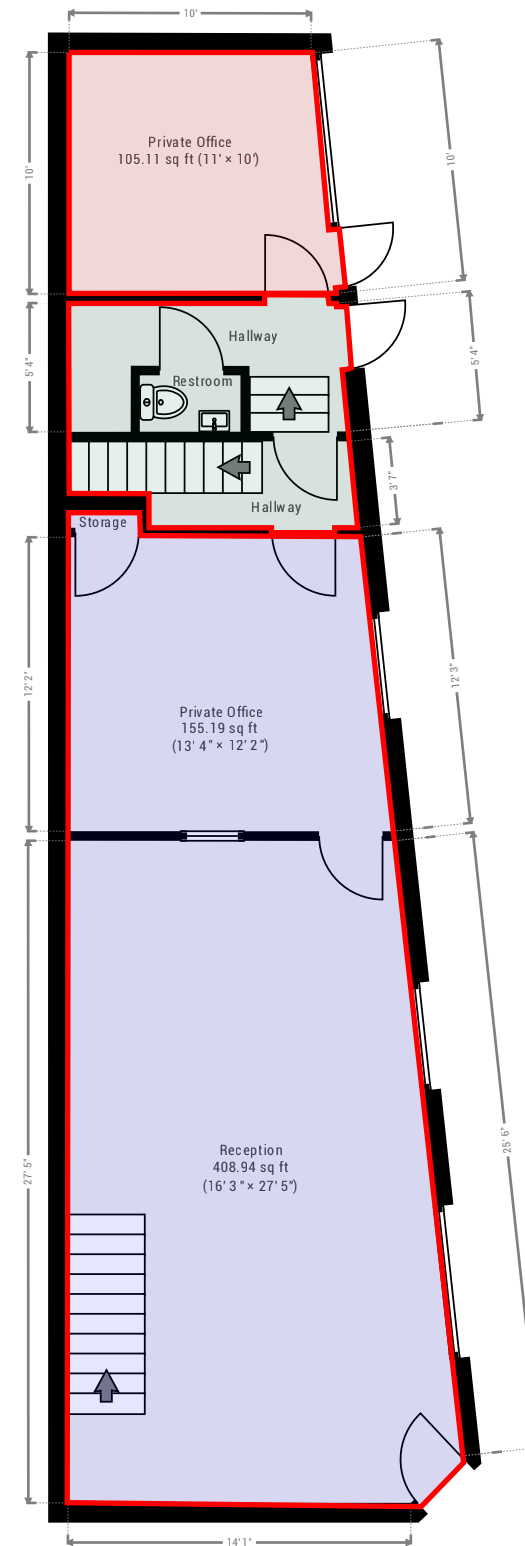
▼ Basement

TOTAL AREA: 195.71 ft² (18.18 m²)



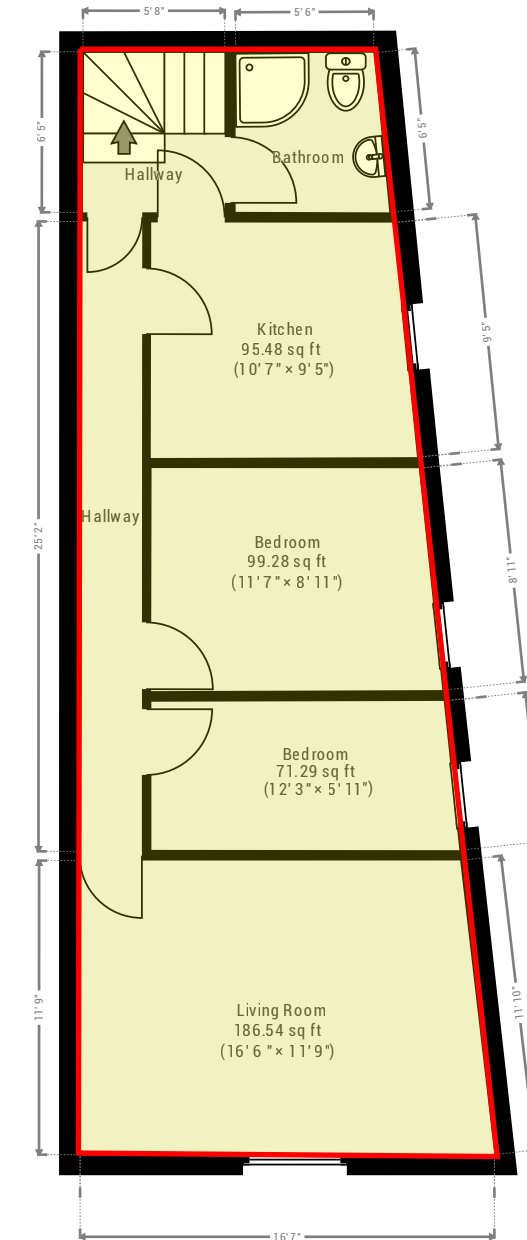
▼ Ground Floor

TOTAL AREA: 764.43 ft² (71.02 m²)



▼ First Floor

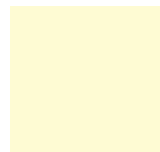
TOTAL AREA: 588.36 ft² (54.66 m²)



Key:



32 Eggington Street
Retail Unit 855.03 ft² (79.43 m²)



32a Eggington Street
First Floor Flat/Residential 588.36 ft² (54.66 m²)



32b Eggington Street
Self Contained Commercial Space/Office 105.11 ft² (9.77 m²)



Communal Area

Whilst every attempt has been made to ensure the accuracy of the floor plan contained here, measurements of doors, windows, rooms and any other items are approximate and no responsibility is taken for any error, omission or mis-statement. This plan is for illustrative purposes only and should be used as such by any prospective purchaser.